

PARKING 101

An Introduction To Parking & Transit at UL @ Lafayette



UNIVERSITY
OF
LOUISIANA
L a f a y e t t e

Office of
**TRANSPORTATION
SERVICES**

PARKING PERMITS

Parking Permits:

- Required every semester
- Are active for one semester only
- Virtual permits
 - No decals or hangtags. Your license plate number is how we recognize you.
 - License plates must be always visible from the aisle.
 - Backing into a parking space requires a front license plate.

Fall 2021 permits are expected to go on sale August 3.

Check our webpage for updates: <https://park.louisiana.edu/news-events>

COMMUTER STUDENT PARKING

Cajun Field Commuter Permits



- Permit required every semester. Commuter permits are free.
- Bus service to campus. Detailed transit information is covered in the Transit 101 presentation.



Cajun Field Parking Lot

Girard Park Circle Parking Tower

- Levels 1-2: Hourly Park-and-Pay
 - \$5/first 2 hours (minimum) then \$1/hour thereafter
 - Payment options include kiosks located on floors 1-3 with credit/debit or the ParkMobile app.
- Levels 3-6: semester permit parking only
- This is the only on-campus permit option for commuter students
- Guaranteed parking every class day



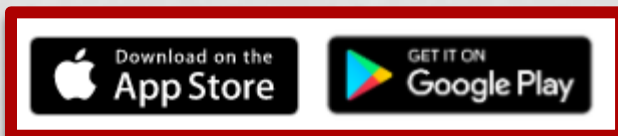
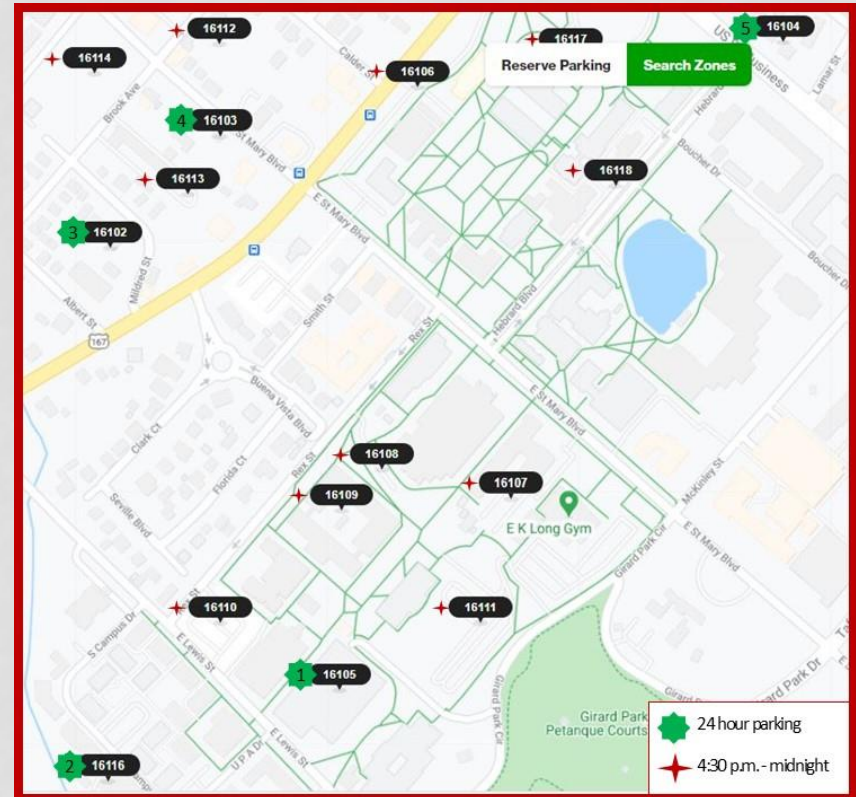
**Girard Park Circle
Parking Tower**

138 Girard Park Circle



ParkMobile® @UL

- Hourly parking options.
- There are 5 lots available 24 hours a day, seven days a week.
- There are 11 lots available 4:30 p.m. – midnight Monday-Friday and 24 hours Saturday and Sunday.
- Search Zones: [ParkMobile @ UL](#)
- App available for download on the App Store and Google Play.



RESIDENTIAL STUDENT PERMITS

- Permits are required each semester
- Permits sold based on the housing assignment
- Residential students may have one parking permit with one car each semester. (The residential student must be the driver of the vehicle.)
- Refer to the [UL Zone Listing and Map](#) webpage for parking locations.

Green Residential

- Baker, Bonin, Coronna, Harris and Huger Hall residents
- Parking locations: Olivier Garage floors 3-6; Taft Garage all floors. Zone 15 is overflow parking only.

Yellow Residential

- Agnes Edwards Hall residents
- Parking locations: Zones 29R & 27R. Zone 15 is overflow parking only.

Orange Residential

- Legacy Park Apartments
- Parking location: zone 23R only
- No overflow parking locations necessary due to size of lots.

Fall 2021 permits are expected to go on sale August 3.

UL Traffic Code: <https://park.louisiana.edu/parking-enforcement/traffic-code>

2021-2022 STUDENT PERMIT PRICES

Permit	Summer 2021	Fall 2021	Spring 2022
Residential	\$20	\$40	\$40
Cajun Field	Free	Free	Free
Girard Parking Tower (floors 3-6)	\$100	\$325	\$325

A change in housing assignment may require a change in your permit.

- Bring a housing assignment slip to our office that indicates your new housing. We will check if your permit needs to be changed.
- There may be a \$10 transfer fee to make the change.
- Not changing a permit will cause “Wrong Zone” citations if parked outside of your permit zone.

Fall 2021 permits are expected to go on sale by August 3.

HOW TO PURCHASE A PERMIT

Online Option

- Use the Step-by-Step Instructions posted on our website - [How to Purchase a Parking Permit](#)
- Important:
 - Getting your permit is a two-step process: register the vehicle **AND** purchase the permit
 - Get the plate right!
 - Reference your vehicle registration for correct plate information, especially specialty plates.

In Person *in our office*

- Bring student ID, vehicle registration and payment.
 - Accepted payment methods include debit/credit card, money order and Cajun Cash.
 - Checks and cash are not accepted.
- Office location and hours posted on Contact Us slide.

ENFORCEMENT



- Parking is enforced:
 - Monday – Friday: 7:00 a.m. – 9:00 p.m. **even** when classes are not in session (ex. Fall break, between semesters, etc.)
 - No enforcement on days when university offices are closed (ex. Holidays)
- Review the [Traffic Code](#) for all parking rules.
- Two Types
 - University vehicle - LPR
 - On foot enforcement
- Confirming vehicles:
 - have an active permit;
 - are in the correct zone/permitted area;
 - the plate is visible from aisle;
 - The vehicle is legally parked
 - and more.

CITATIONS

Citation Notification

- Paper citation placed on windshield
- Email sent to UL email address

Consequences

- Fines
 - Every citation has a related fine.
 - No due dates but they do escalate.
- Holds
 - A **hold** is placed on the university account until fine is paid.
 - Holds prevent registration, drop/add classes, viewing grades and getting a permit.
- Immobilizations (boots!)
 - A vehicle is eligible for immobilization the day after it accumulates the third unpaid citation.
 - Email notification sent upon immobilization of a vehicle
 - Immobilizations are a separate citation with \$100 fine.
 - Immobilized vehicles are towed if balance due is not paid by 4 pm same day.

SO YOU'VE RECEIVED A CITATION - NOW WHAT?

Citation Checklist

- Do you have an active permit?
- Does the license plate information match your vehicle?
- Did you park correctly?
- Check the [Traffic Code](#) for other possible violations.

Citation Payments

- Citation fines may be paid through your parking portal access through ULINK or in person in our lobby.
- Payments made in the lobby must be debit or credit card, Cajun Cash or money order. Personal checks and cash are not accepted.
- Holds for citations are lifted the next business day after the payment is made.

Appeals

- 1st level
 - Must be submitted online within 4 class days or 96 hours.
 - Appeals Officer will review and respond within 2-14 days.
- 2nd level
 - Appeals Committee meets once a month during fall & spring.
 - Must sign up in office to attend.

TRAFFIC CODE



The Traffic Code is available online:

<https://park.louisiana.edu/parking-enforcement/traffic-code>

Most Issued Violations:

- NO ACTIVE PERMIT / NOT REGISTERED
 - A parking permit is required every semester.
- PLATE NOT VISIBLE
 - All license plates must be visible from the traffic aisle in all locations.



SAMPLE OF CITATIONS AND FINES

No Parking Area	\$35
Blocking Driveway	\$35
No Parking on Grass	\$35
Overtime Parking	\$35
Disobeying Attendant/Officer/Parking Enforcement	\$35
Not Registered for Daytime Parking	\$35
Parking Not to Obstruct Traffic	\$35
No Parking Zone	\$35
Improper Parking	\$35
Backing into Stall/Illegal Parking	\$35
Pay By Space Violation	\$35
No Active Permit	\$50
Not Registered	\$50
Wrong Zone	\$50
No Parking Tow Away Zone	\$50
No Parking in Maintenance/Reserve Space	\$50
No Parking in Fire Lane	\$100
Blocking Access to Handicap Space	\$100
Immobilizer	\$100
Relocation Fee	\$100
Remove/Tamper with Immobilizer	\$200
Handicapped Parking	\$300

Complete list of violations available at [park.louisiana.edu/traffic code](https://park.louisiana.edu/traffic-code)

COMMUTER STUDENT PARKING

Cajun Field Commuter Permits

- Commuter parking is located at Cajun Field
- Permit required every semester. Commuter permits are free.
- The bus stop is located by gate D at the football stadium.

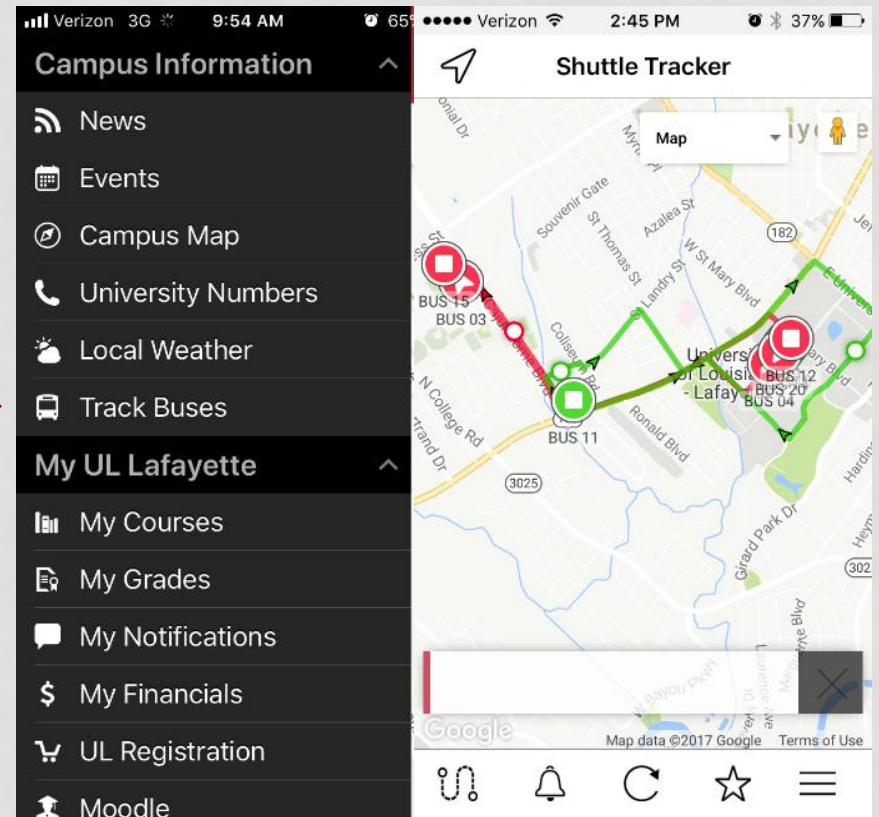
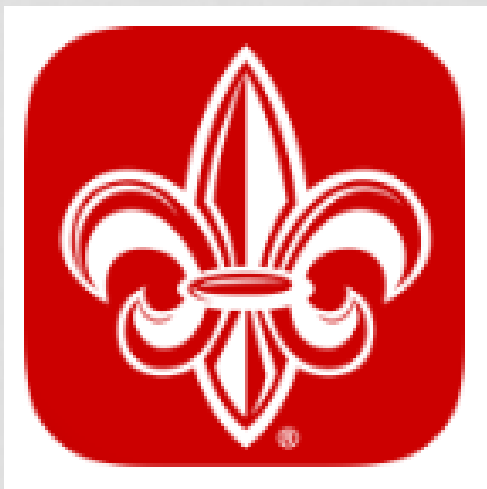


Cajun Field Parking Lot

THERE'S AN APP FOR THAT

The Official UL Lafayette App provides live bus tracking, ETA to bus stops, night shuttle hours and more!

The **UL Lafayette** app is available for iOS and Android



TRANSIT SCHEDULE

Fall /Spring Semester Bus Schedule

Monday – Thursday	7:00 AM – 7:00 PM (Regular Route Services)
Friday	7:00 AM – 3:00 PM (Regular Route Services)
Saturday – Sunday	Closed

- Bus service always starts at 7 AM. Arrive early! Rush hour traffic causes slow downs for our buses too.

Summer Semesters and Intersessions

Updates are posted at [UL Transit](#)

Shuttle service is available on non-class days when the university is open.

Transit and shuttle services are suspended during official university closures.



ON-CALL SHUTTLE SERVICE

337-482-5305

Fall /Spring Semester

Monday – Thursday	7:00 AM – 10:15 PM –service to The Union, Legacy & Heritage Apartments, and Bourgeois Hall; Cajun Field after 7:00 PM
Friday	7:00 AM – 8:15 PM – service to The Union, Legacy & Heritage Apartments, and Bourgeois Hall; Cajun Field after 3:00 PM
Saturday – Sunday	Closed

Summer Semesters and Intersessions

- Updates are posted at [UL Transit](#)

Shuttle service is available on non-class days when the university is open.

Transit and shuttle services are suspended during official university closures.

BIKES

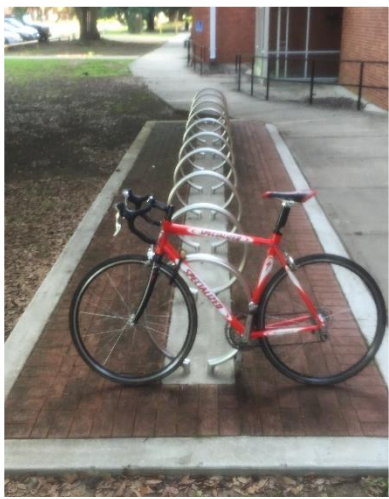
Bike Registration

- Bike Registration at Lafayette Police Department
- Also keep a record of your bike: picture, brand, color & serial number.

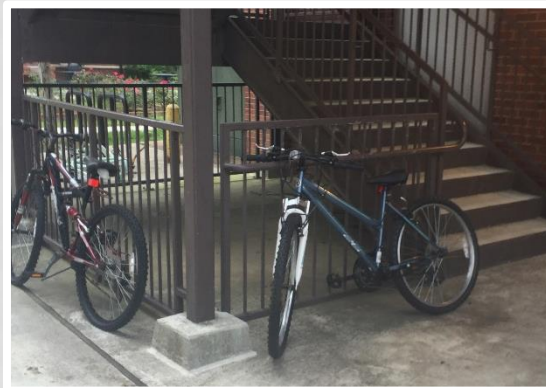
Bike Parking

- Lock bikes to bike racks only
- Bikes may be impounded if not locked in approved locations

Correct

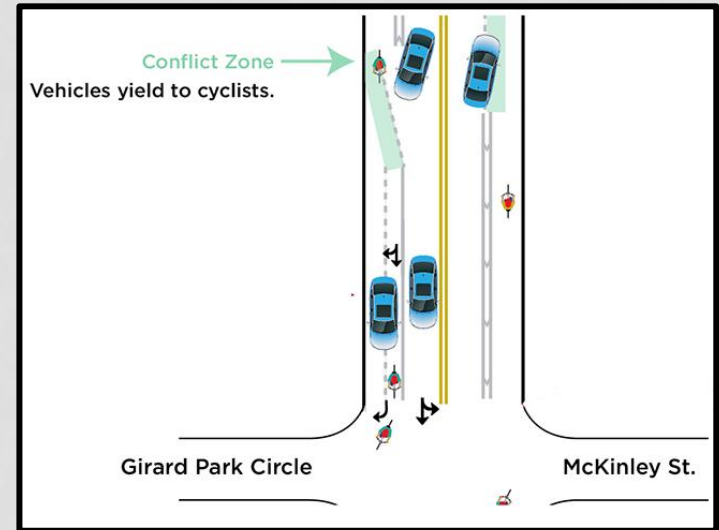


Not correct



Bike Safety

- Green lanes on St. Mary are shared lanes with vehicles.



- Rules of the Road
 - Ride with traffic, not against
 - Ride defensively

REMINDERS

**On-Call Shuttle Service
(337)482-5305**

**All vehicles parked at Cajun Field must
have an active permit every semester.**

CONTACT US

Office: 619 McKinley Street, #100 (Olivier Parking Tower)

Lobby Hours

SP21 & SU21: Mon-Thurs: 10:00 a.m. - 2:00 p.m.
Fri: 8:00 a.m. - 12:00 p.m.

Fall '21 (effective 8/1): Mon-Thurs: 7:30 a.m.- 4:45 p.m.
Fri: 7:30 a.m. - 12:00 p.m.

*Office hours may be effected by university closure dates.
Please check our website and social media pages for updated information.*

Email: geauxpark@louisiana.edu

Phone: (337)482-6858



park.louisiana.edu



[Office Of Transportation Services](#)



[@UL_TransportationServices](#)



[@GeauxPark](#)
[@GeauxBus](#)